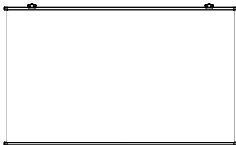


Installation Instructions for Projection Screen

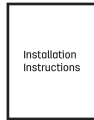
No.50448 / No.50446 / No.50449

1 Packing List

Please check if the product is intact after unpacking and verify that all the accessories have been received. If any items are missing, please contact your dealer. (Note: This diagram is for reference only, please take the actual product as standard.)



Projection screen (x1)



User manual (x1)



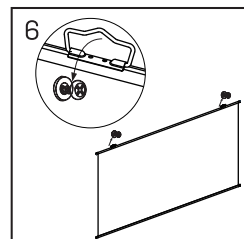
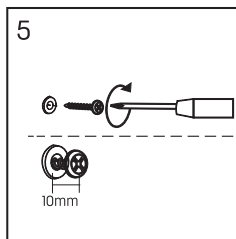
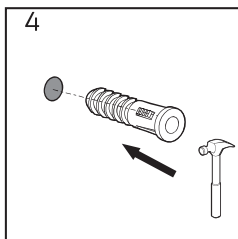
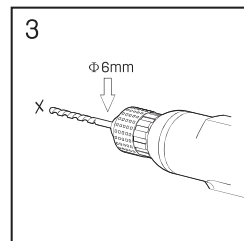
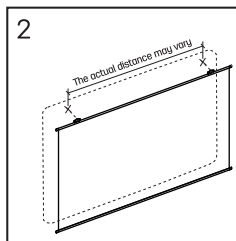
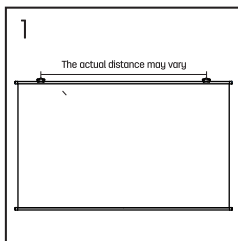
Expansion anchor (x2)



Self-tapping screw (x2)

2 Installation method

1. Measure the distance between the two rings for hanging on the casing (the actual distance may vary).
2. Mark two hole locations on the wall at the same horizontal level.
3. Use a power drill ($\Phi 6\text{mm}$ drill bit) to drill two pilot holes at the marked locations.
4. Use a hammer to tap wall anchors into your drilled holes.
5. Insert the self-tapping screws into expansion anchors with a Phillips screwdriver, leaving about 10mm at the end for hanging the product.
6. Lift the screen into the hook screws to hang.



Note: The projected image may suffer from distortion when using a short-focus or ultra-short-focus projection equipment.

Reminder: Please read this manual carefully before use and follow the instructions to operate properly.



Inspector: _____

No.: _____

DELI GROUP CO., LTD.

Address: Deli Industrial Park in Ninghai

County, Ning Bo, Zhejiang, China

[Http://www.nbdeli.com](http://www.nbdeli.com)

MADE IN CHINA



(Reserved for future use)

Version: 2.0

Date: October 2020